



3D Disto Software
for Windows®



Leica 3D Disto Tutorial



All about height

- when it has to be **right**



All about height

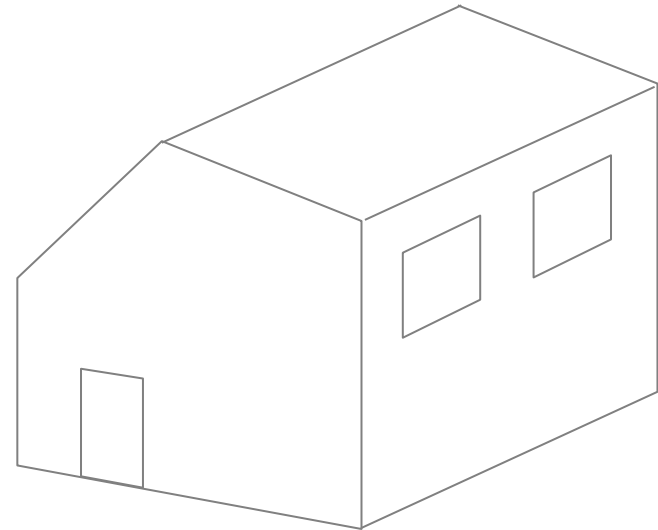
Questions

- How can I measure the height difference between two points?
- What is a „height reference“?
- What is the „height“ of a measured point?



H


+1.000m

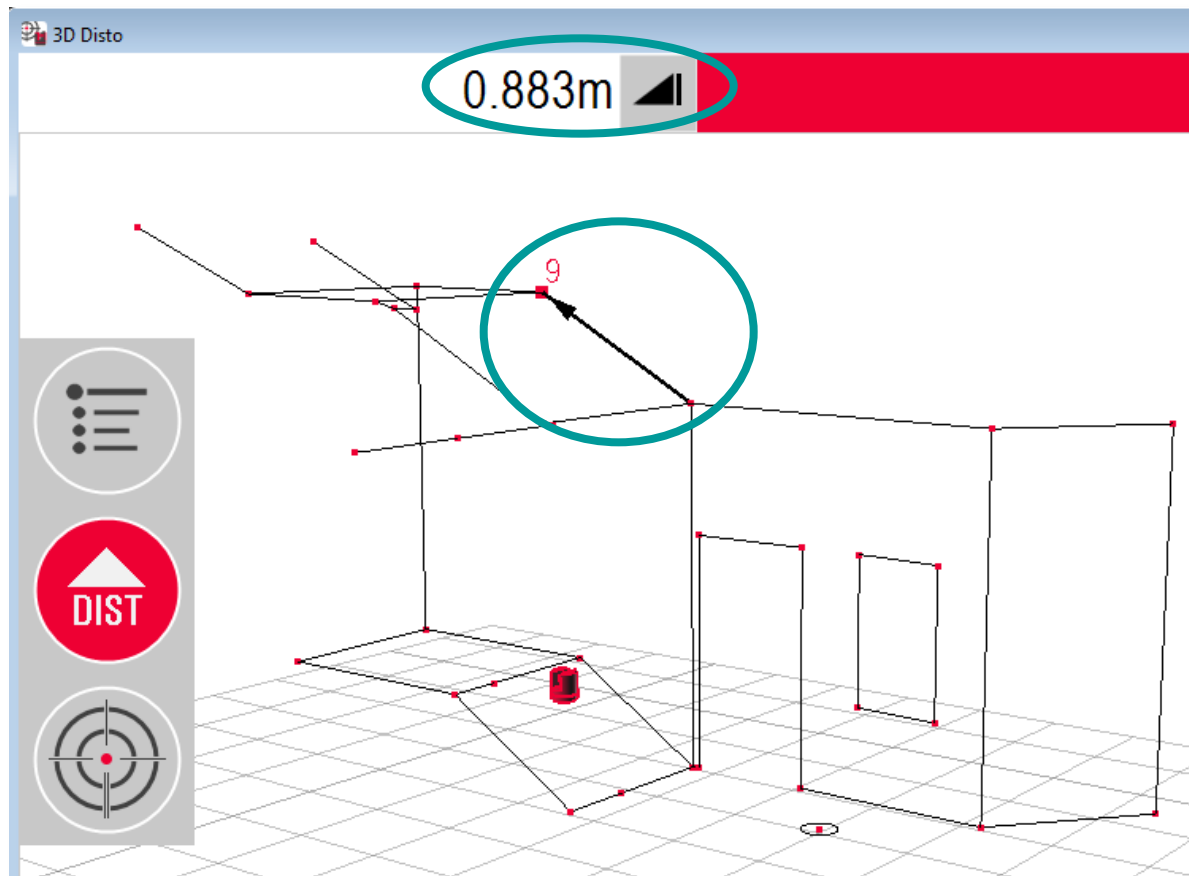


- when it has to be **right**

All about height

How to measure the height difference between two points

- measure both points
- the result is 



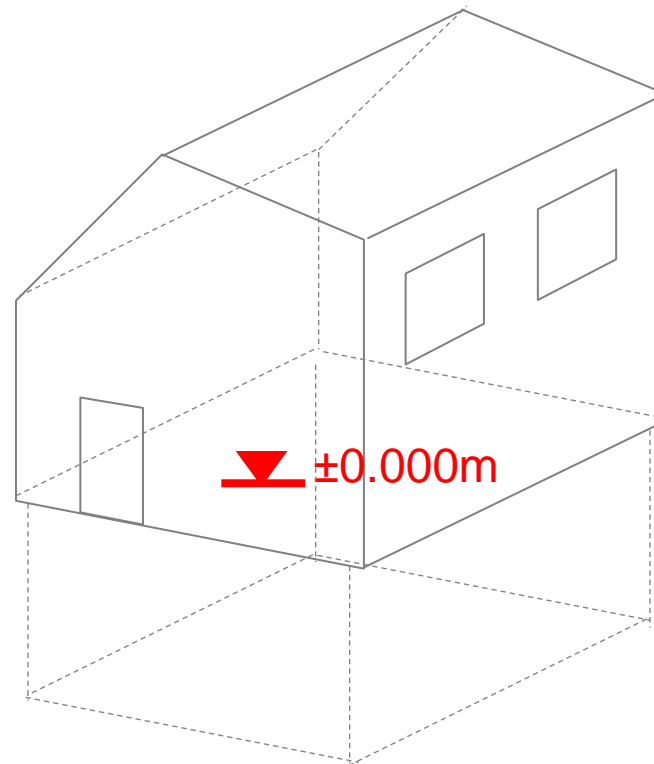
- when it has to be **right**

All about height

What is a „Height Reference“?



The height reference is a point that all other heights refer to, e.g. the basement floor may be defined as «0.000»

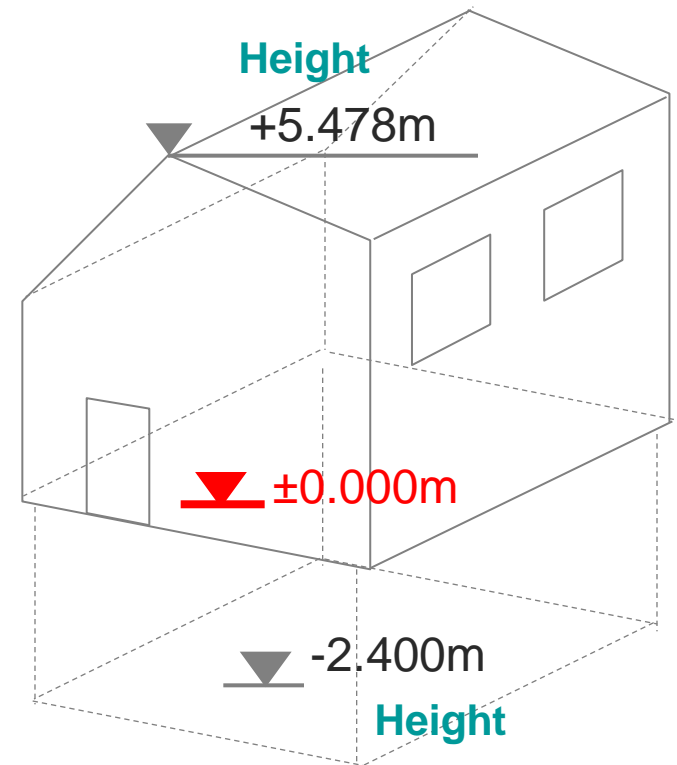
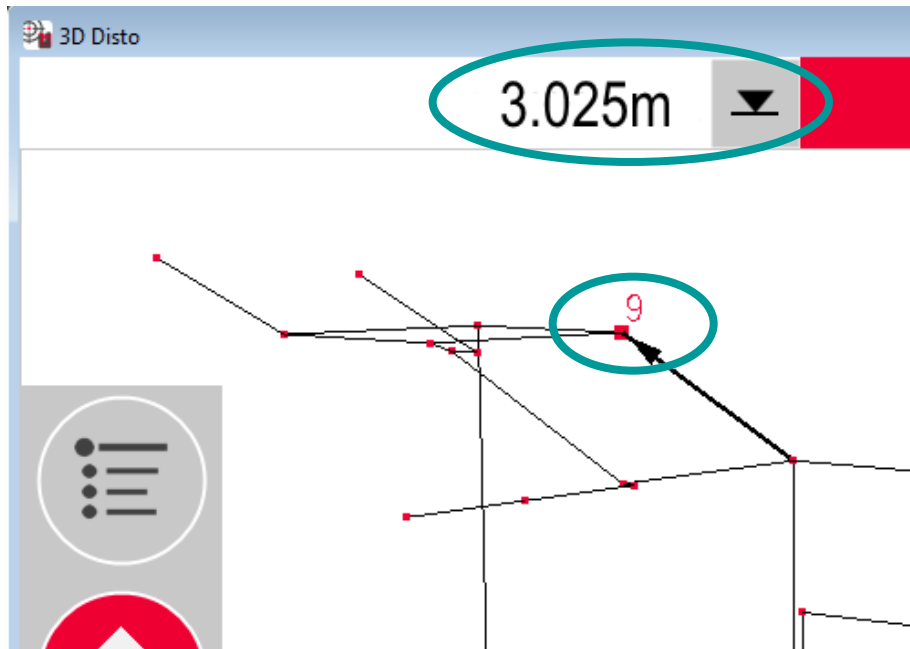


- when it has to be **right**

All about height

What is the „height“ of a measured point?

The height is the level of the point in relation to the reference. The result is 

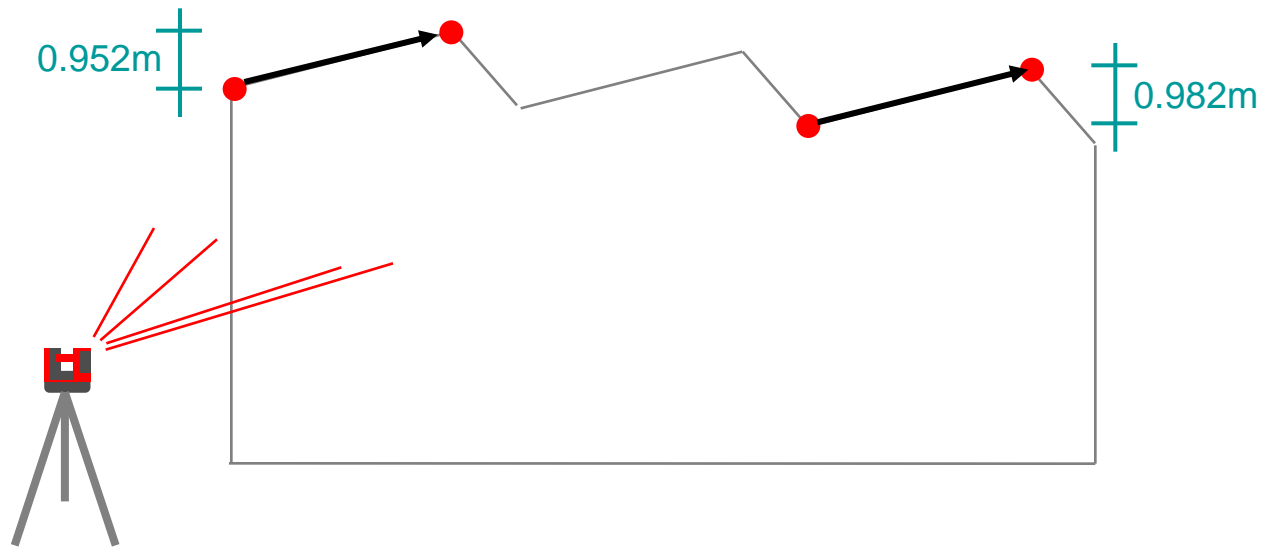


- when it has to be **right**

All about height

Advices for measurements

You don't need to measure a height reference if you are only interested in height differences or if you don't need to fit to a certain level.



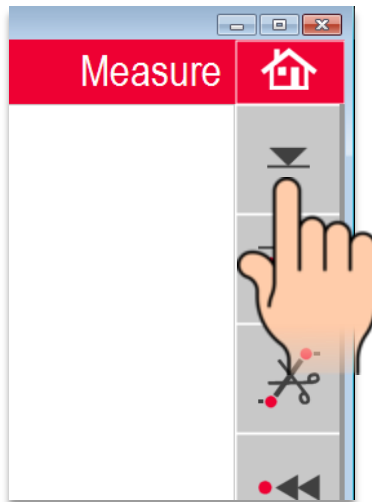
- when it has to be **right**

All about height

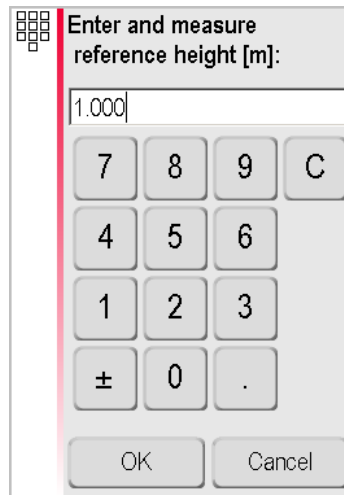
Advices for measurements

Measure a height reference if your measurement must fit to known level, e. g. to a meter mark.

1: start tool



2: enter reference



3: measure the meter mark

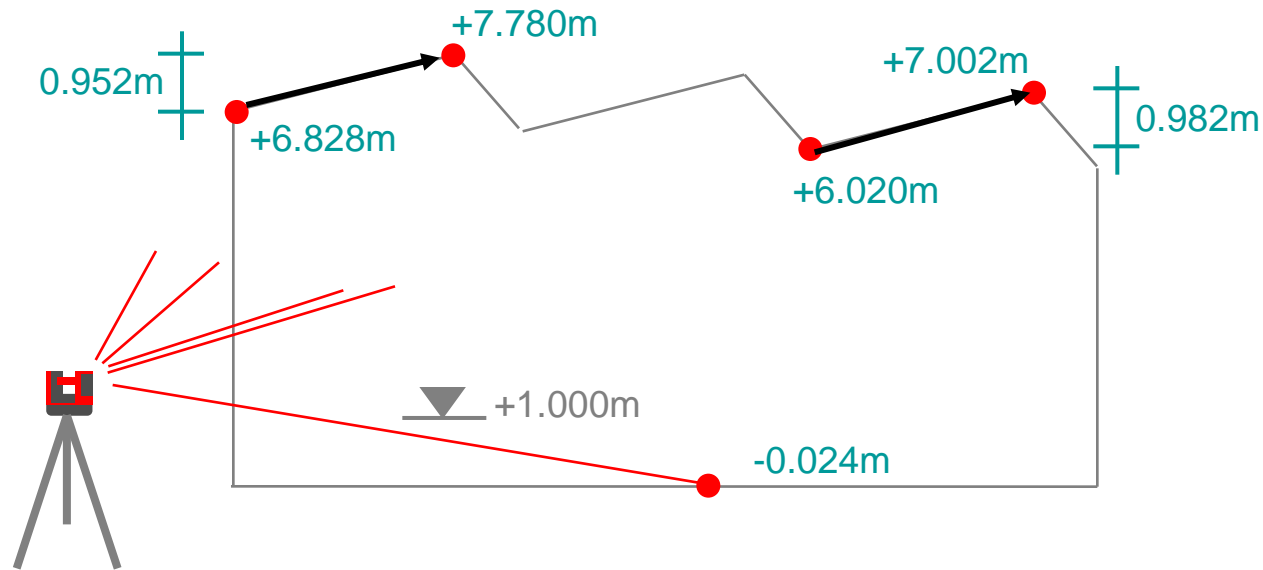


- when it has to be **right**

All about height

Advices for measurements

4: now measure the object. All heights will fit to the object data.



- when it has to be **right**

Leica 3D Disto

Registration at myWorld



Register your 3D Disto on myWorld for:

- warranty extension
- license keys
- more tutorials
- free software updates
- support
- manuals

The screenshot shows the myWorld@Leica Geosystems website interface. At the top left is the myWorld logo with the tagline "when it has to be right". At the top right is the Leica Geosystems logo with a red cross icon. Below the header is a red horizontal bar. The main content area is divided into two sections. On the left is a large image of a smiling male customer service representative wearing a headset, holding a 3D Disto scanner. On the right is a login form titled "Anmeldung" (Login). The form contains two input fields for "E-Mail" and "Passwort" (Password), and a button labeled "Anmelden". Below the input fields are three links: "Registrieren" (Register), "Passwort vergessen" (Forgot password), and "Support". Below the login form is a section titled "Willkommen bei myWorld@Leica Geosystems" (Welcome to myWorld@Leica Geosystems). The text in this section reads: "myWorld@Leica Geosystems bietet den Kunden und Partnern von Leica Geosystems ein breites Angebot an Services, Informationen und Schulungsunterlagen. Mit myWorld können Sie direkt auf alle wichtigen Services zugreifen - rund um die Uhr und jeden Tag! Mit myWorld stellen Sie sicher, dass Sie laufend die neuesten Informationen von Leica Geosystems bekommen und Ihre Instrumente und Software auf dem neuesten Stand sind. Und damit erhöhen Sie Ihre Produktivität." Below this text is a small line: "Die Welt von Leica Geosystems ist nur einen Mausklick entfernt - treten Sie ein: myWorld@Leica Geosystems!"

www.disto.com